

A MASTERCLASS IN TIME & GROOVE DEVELOPMENT



SCOTT'S
BASS LESSONS





A MASTERCLASS IN TIME & GROOVE DEVELOPMENT

LESSON #1 - BECOMING FAMILIAR WITH SUBDIVISIONS

Quarter Notes (Set the Metronome to 60bpm)

4:28 ♩ = 60

1 2 3 4 1 2 3 4

T
A
B
5 5 5 5 5 5 5 5

Round & Round...

5:25 ♩ = 60

Eighth Notes

1 and 2 and etc.

5 5 5 5 5 5 5 5 5 5 5 5 5 5

Round & Round...

6:53 ♩ = 60

Sixteenth Notes

1 e + a 2 e + a etc..

5 5 5 5 5 5 5 5 5 5 5 5 5 5 5 5 5 5

Round & Round...

Half Tempo Exercise

#1 - Set Metronome to 80bpm (Click on Every Beat)

11:44

♩ = 80

Musical notation for exercise #1, consisting of a bass staff and a guitar staff. The bass staff contains a melodic line of quarter notes: G2, A2, B2, C3, D3, E3, F3, G3, A3, B3, C4, D4, E4, F4, G4. The guitar staff contains a single-fingered pattern of five-fingered chords, with the number '5' written below each note.

Round & Round...

#2 - Set Metronome to 40bpm (Click on 1 & 3)

13:00

♩ = 80

Musical notation for exercise #2, consisting of a bass staff and a guitar staff. The bass staff contains a melodic line of quarter notes: G2, A2, B2, C3, D3, E3, F3, G3, A3, B3, C4, D4, E4, F4, G4. The guitar staff contains a single-fingered pattern of five-fingered chords, with the number '5' written below each note.

Round & Round...

#3 - Set Metronome to 40bpm (Click on 1)

14:50

♩ = 80

Musical notation for exercise #3, consisting of a bass staff and a guitar staff. The bass staff contains a melodic line of quarter notes: G2, A2, B2, C3, D3, E3, F3, G3, A3, B3, C4, D4, E4, F4, G4. The guitar staff contains a single-fingered pattern of five-fingered chords, with the number '5' written below each note.

Round & Round...



A MASTERCLASS IN TIME & GROOVE DEVELOPMENT

LESSON #2 - THE UPBEAT GROOVE EXERCISE

1:09

♩ = 100

Upbeat Groove: 1. Metronome on every beat
2. Metronome on upbeats

T
A
B



A MASTERCLASS IN TIME & GROOVE DEVELOPMENT

LESSON #3 - THE HOPPER

4:10

♩ = 140

Basic Groove

**Metronome set to 140bpm on offbeat 16th notes:
1 (e)and (a) 2 (e) and (a) 3 (e) and (a) 4 (e) and (a)**



A MASTERCLASS IN TIME & GROOVE DEVELOPMENT

LESSON #4 - GETTING YOUR SCALES CENTERED

C Major Scale 1/4 Notes

(Metronome: 50bpm - Click 2 & 4)

2:39

T
A
B

8 10 7 8 10 7 9 10 9 7 10 8 7 10 8 7

8th Notes

3:17

8 10 7 8 10 7 9 10 9 7 10 8 7 10 8 7

6:55

8th Note Triplets (play up and down x3)

8 10 7 8 10 7 9 10 9 7 10 8 7 10 8 7 10 8 7

Musical notation for a bass exercise. The first staff shows eighth note triplets in the bass clef. The second staff is a fretboard diagram with the following fret numbers: 9 7 10 8 7 10 8 7 8 10 7 8 10 7 9 10 9 7 10 8 7 10 8 7.

16th Notes

7:15

Musical notation for a bass exercise featuring 16th notes. The first staff shows 16th notes in the bass clef. The second staff is a fretboard diagram with the following fret numbers: 8 10 7 8 10 7 9 10 9 7 10 8 7 10 8 7.

Play up through Exercises in order then back down as follows:

- 1/4 Notes**
- 8th Notes**
- 8th Note Triplets**
- 16th Notes**
- 8th Note Triplets**
- 8th Notes**
- 1/4 Notes**
- Round and Round...**



A MASTERCLASS IN TIME & GROOVE DEVELOPMENT

LESSON #5 - THE SLOW WORM

C Major Scale: 1 Note Per Click (20bpm)

1:49 ♩ = 20

8 10 7 8 | 10 7 9 10 | 9 7 10 8 | 7 10

Try at a variety of slow tempi



A MASTERCLASS IN TIME & GROOVE DEVELOPMENT

LESSON #6 - THE 4 ON 4 OFF GROOVE EXERCISE

1:25

Basic Am Groove

$\bullet = 100$

T
A
B

5 3 5 3 5 3 5 2 3 4

Round & Round . . .

1. Metronome Click on every beat
2. Metronome Click 1 bar on, 1 bar off
3. Elaborate on the groove



A MASTERCLASS IN TIME & GROOVE DEVELOPMENT

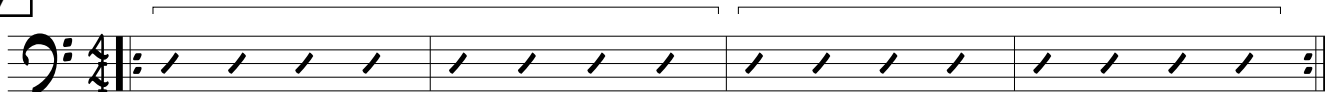
LESSON #7 - THE 4 ON 4 OFF SOLO EXERCISE

Solo in A Minor - 1 Bar of Click On, 1 Bar of Click Off

Click

No Click

2:17



Round & Round . . .



A MASTERCLASS IN TIME & GROOVE DEVELOPMENT

LESSON #8 - THE TWO ON, TWO OFF EXERCISE

0:57

♩ = 112

Dm Groove

T
A
B

5 3 2 5 x 3 2

1. Click On all beats for 2 bars, Click Off for 2 bars
2. Click On beat 1 for 2 bars, Click Off for 2 bars
3. Advanced: Elaborate on the groove



A MASTERCLASS IN TIME & GROOVE DEVELOPMENT

LESSON #9 - THE TWO BEAT

F Blues (Walking Line)

Ex 1. Click on Beat 2 only

Ex 2. Click on Beat 4 only

1:20

F7 Bb7 F7 Cm7 F7

Bb7 Bbm7 F7 Am7 D7

Gm7 C7 Am7 D7 Gm7 C7



A MASTERCLASS IN TIME & GROOVE DEVELOPMENT

LESSON #10 - SONG FORM FOCUS

F Blues (Walking Line)

Click on Beat 1 of bars 1, 2, 3, 4, 5, 9

3:52

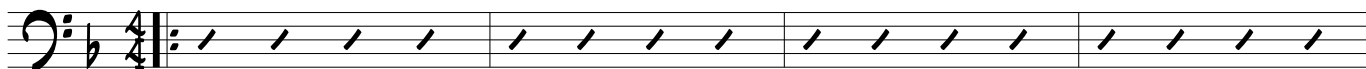
F7

B \flat 7

F7

C \flat M7

F7



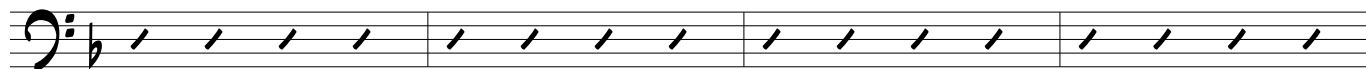
B \flat 7

B \flat DM

F7

A \flat M7

D7



G \flat M7

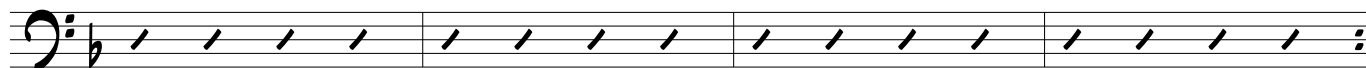
C7

A \flat M7

D7

G \flat M7

C7





A MASTERCLASS IN TIME & GROOVE DEVELOPMENT

LESSON #11 - 6/8 GROOVE DEVELOPMENT

4/4 Groove

1:25

Musical notation for a 4/4 groove. The top staff shows a bass line in G major (one sharp) with a 4/4 time signature. The notes are G2, A2, B2, and G2. The bottom staff shows the fretboard with fingerings: 3 on the first string, 5 on the second, 3 on the third, and 5 on the fourth.

6/8 Groove

2:27

Musical notation for a 6/8 groove. The top staff shows a bass line in G major (one sharp) with a 6/8 time signature. The notes are G2, A2, B2, G2, A2, B2. The bottom staff shows the fretboard with fingerings: 3 on the first string, 5 on the second, 3 on the third, 5 on the fourth, 3 on the fifth, and 5 on the sixth.

6/8 Groove against 4/4 time (Triplet Feel)

Musical notation for a 6/8 groove against 4/4 time. The top staff shows a bass line in G major (one sharp) with a 4/4 time signature. The notes are G2, A2, B2, G2, A2, B2. The bottom staff shows the fretboard with fingerings: 3 on the first string, 5 on the second, 3 on the third, 5 on the fourth, 3 on the fifth, and 5 on the sixth. Brackets above the notes indicate triplet groupings.

Move Between 4/4 and 6/8 Triplet Feels

3:10

X4

X4

The first exercise consists of two measures. The first measure is in 4/4 time and contains a triplet of eighth notes (G2, A2, B2) followed by a quarter note (C3), a quarter note (D3), and a quarter note (E3). The second measure is in 6/8 time and contains a triplet of eighth notes (G2, A2, B2) followed by a quarter note (C3), a quarter note (D3), and a quarter note (E3). The bass line for the first measure is 3 5 3 5 and for the second measure is 3 5 3 5 3 5.

Advanced: Blues in F (Moving Between Feels)

9:21

The first part of the advanced blues exercise consists of three measures. The first measure is in 4/4 time and contains a quarter note (F2), a quarter note (G2), a quarter note (A2), and a quarter note (B2). The second measure is in 6/8 time and contains a quarter note (F2), a quarter note (G2), a quarter note (A2), and a quarter note (B2). The third measure is in 4/4 time and contains a quarter note (F2), a quarter note (G2), a quarter note (A2), and a quarter note (B2). The bass line for the first measure is 0 1 2 and for the second and third measures is 3 5 3 5 3 5.

The second part of the advanced blues exercise consists of three measures. The first measure is in 4/4 time and contains a quarter note (F2), a quarter note (G2), a quarter note (A2), and a quarter note (B2). The second measure is in 6/8 time and contains a quarter note (F2), a quarter note (G2), a quarter note (A2), and a quarter note (B2). The third measure is in 4/4 time and contains a quarter note (F2), a quarter note (G2), a quarter note (A2), and a quarter note (B2). The bass line for the first measure is 3 5 3 5 5 3 5 3 and for the second and third measures is 3 0 3 0 1 0 2 3 0 1.

The third part of the advanced blues exercise consists of three measures. The first measure is in 4/4 time and contains a quarter note (F2), a quarter note (G2), a quarter note (A2), and a quarter note (B2). The second measure is in 6/8 time and contains a quarter note (F2), a quarter note (G2), a quarter note (A2), and a quarter note (B2). The third measure is in 4/4 time and contains a quarter note (F2), a quarter note (G2), a quarter note (A2), and a quarter note (B2). The bass line for the first measure is 3 5 3 5 5 3 5 3 and for the second and third measures is 7 5 7 7 6 7 5 7 5 6 7.

The image shows a musical exercise for the bass line in G major. It consists of three measures of music. The first measure contains a triplet of eighth notes (G4, A4, B4) followed by a triplet of eighth notes (C5, B4, A4). The second measure contains a triplet of eighth notes (G4, F4, E4) followed by a quarter note (D4), a quarter note (C4), and a quarter note (B3). The third measure contains a triplet of eighth notes (A3, G3, F3) followed by a quarter note (E3), a quarter note (D3), and a quarter note (C3). Below the staff, the corresponding fingerings are listed: 5 7 8 7 7 7 5 4 7 5 3 2 3 5 3 4 3 2 5 2 5 5 2.

etc...



A MASTERCLASS IN TIME & GROOVE DEVELOPMENT

LESSON #12 - SHUFFLE GROOVE DEVELOPMENT

Basic Shuffle Groove

1:25

T
A
B

Round & Round . . .

Groove Through Blues Progression

1. Click On Each Beat (Metronome set to 80bpm)
2. Click On 2 & 4 (Metronome set to 40bpm)
3. Advanced - Click on 3rd triplet beat: 1 - tri -(plet)

3:00

$\text{♩} = 80$ A7

Musical notation for the first system, featuring a bass staff with a treble clef, a key signature of two sharps (F# and C#), and a 4/4 time signature. The melody consists of quarter notes and eighth notes, with triplets in the second and fourth measures. The bass line consists of a sequence of chords: 5, 7, 5, 7 in the first measure; 5, 7, 5, 7, 5, 7 in the second; 5, 7, 5, 7 in the third; and 5, 7, 5, 7, 5, 7 in the fourth. Chord symbols D7 and A7 are placed above the first and third measures respectively.

Musical notation for the second system, continuing the bass staff with a treble clef, a key signature of two sharps (F# and C#), and a 4/4 time signature. The melody continues with quarter notes and eighth notes, including triplets in the second and fourth measures. The bass line consists of a sequence of chords: 7, 9, 7, 9 in the first measure; 5, 7, 5, 7, 5, 7 in the second; 5, 7, 5, 7 in the third; and 5, 7, 5, 7, 5, 7 in the fourth. Chord symbols E7, D7, and A7 are placed above the first, second, and third measures respectively.



A MASTERCLASS IN TIME & GROOVE DEVELOPMENT

LESSON #13 - SWING FEEL DEVELOPMENT

Sample Chord Progression (Jazz Standard)

Ex 1. Walking Bass with click on Beat 2 & 4 (for 160bpm use 80bpm click)

Ex 2. Click on 3rd triplet beat of 2 & 4: 1 tri plet 2 tri (plet) 3 tri plet 4 tri (plet)

C_{M7} F₇ B_bM_AS₇ E_bM_AS₇

A_{M7(b5)} D₇ G_M G₇

C_{M7} F₇ B_bM_AS₇ E_bM_AS₇

A_{M7(b5)} D₇ G_M

A_{M7(b5)} D₇ G_M

C_{M7} F₇ B_bM_AS₇ E_bM_AS₇



A musical staff in bass clef with a key signature of one flat (Bb). The staff contains six measures, each with a slash indicating a note. Above the staff, the following chords are written: Am7(b5), D7, Gm, Gb7, Fm7, and E7.



A musical staff in bass clef with a key signature of one flat (Bb). The staff contains four measures, each with a slash indicating a note. Above the staff, the following chords are written: EbMA7, Am7(b5), D7, and Gm.

Try increasing the tempo:
240bpm (120bpm click)
280bpm (140bpm click)
320bpm (160bpm click)



A MASTERCLASS IN TIME & GROOVE DEVELOPMENT

LESSON #14 - SWING SOLO DEVELOPMENT

Chord Progression (Autumn Leaves)

Solo with click on 2 & 4 (Metronome set to 80bpm)

C_M7 F7 B^bM_A7 E^bM_A7

A_M7(b₉) D7 G_M G7

C_M7 F7 B^bM_A7 E^bM_A7

A_M7(b₉) D7 G_M

A_M7(b₉) D7 G_M

C_M7 F7 B^bM_A7 E^bM_A7



A musical staff in bass clef with a key signature of one flat (B-flat). The staff contains four measures of music, each represented by a slash (/). Above the staff, the following chords are written: **A_M7(b5)**, **D7**, **G_M**, **G_b7**, **F_M7**, and **E7**.

A musical staff in bass clef with a key signature of one flat (B-flat). The staff contains four measures of music, each represented by a slash (/). Above the staff, the following chords are written: **E_bM_A7**, **A_M7(b5)**, **D7**, and **G_M**. The staff ends with a double bar line and repeat dots (:||).